



**TAMS information  
session  
in collaboration with  
DAFM**

**UCD AgTech Innovation Centre  
Lyons Farm  
6<sup>th</sup> June 2024**

**Programme:**

- 10.30 Opening**
- 10.35 Overview of TAMS and Hort strategy  
Presentations by DAFM**
- 12.15 Agtech discussion panel: optimising  
agtech adoption, trends in agtech  
development, the role of TAMS**
- 13.15 Dingle Hub – Tech validation trials**
- 13.40 Closing**
- 13.50 Lunch**



An Roinn Talmhaíochta,  
Bia agus Mara  
Department of Agriculture,  
Food and the Marine

# TAMS 3 Overview of TAMS in the new CAP, its Policy objectives and how it operates

**Dr Robert Leonard**

6<sup>th</sup> June 2024

# Background

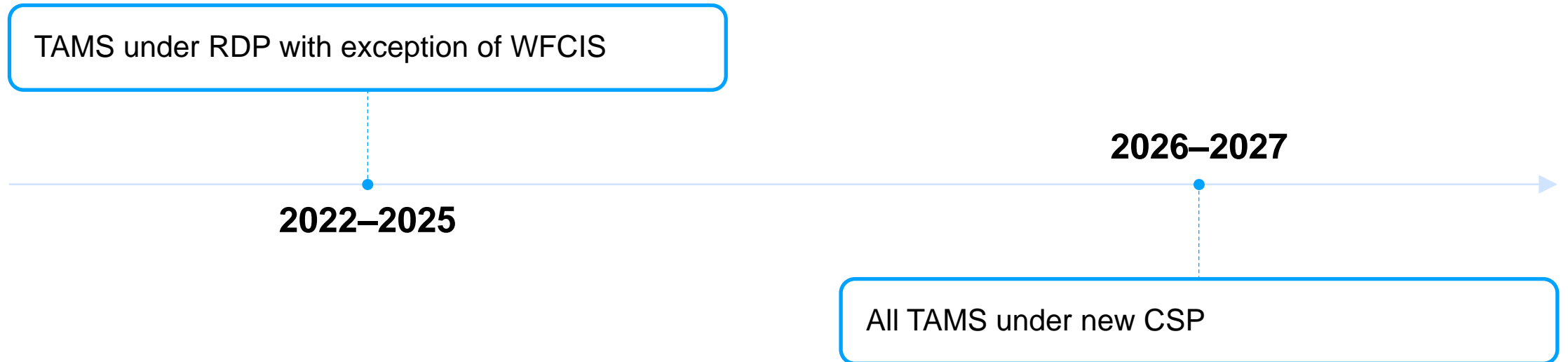


TAMS 3 – Capital Investment schemes to run from 2023 to 2027.

Terms and Conditions updated and revised for all Schemes to conform with new CAP Strategic Plan.



# CAP Strategic Plan



# Requirements for CAP Strategic Plan



All investments to be linked to:

- Climate
  - Environment
  - Animal Welfare
  - Health & Safety
- 
- Funded Investments to go beyond mandatory/normal requirements

# Focus Areas



- **Climate Action**
  - *Ammonia reduction*
  - *Greenhouse gas reduction*
  - *Mitigation measures*
- **Environment**
  - *Organic farming*
  - *Reducing pesticide usage*
  - *Reducing fertiliser usage*
  - *Preventing soil loss*
- **Water Quality**
  - *Reduction of nutrients entering waterbodies*
  - *Slurry and farmyard manure storage*

# Focus Areas



- **Animal Welfare**
  - *Calf welfare*
  - *Pig welfare*
  - *AMR*
  - *Improve general animal housing*
- **Farm Safety**
  - *Reducing fatal and non-fatal incidents*
  - *Animal handling facilities*

# Other considerations



- Synergies with other schemes
  - *Straw incorporation scheme*
  - *Organic Farming scheme*
  - *ACRES*
- Discussions with other areas in DAFM.
  - *Mulchers to reduce need for burning*
  - *Dairy calf to Beef*
  - *Food Vision 2030*
- Available funding for TAMS schemes.
- Full review of all investments in TAMS II undertaken.



# Other considerations



- Technologies must be proven, e.g. trailing shoe grant-aided to maximise ammonia reduction.
- Investments must be capital / tangible in nature
- Must be able to measure / verify completed investment
- Multiple suppliers in the market
- Expected life of most investments 15 to 20 years
- Applicants must maintain investment for a minimum of 5 years post payment

# Investment Review



- Approximate 380 existing Investments carried over from TAMS II to TAMS 3 across all sectors.
- A small number of investments were dropped / restricted.
- Carried over investment types include
  - animal housing, nutrient storage, organic housing, organic machinery, tillage machinery, new pig housing, pig and poultry housing upgrades, farm safety equipment, animal handling facilities
- Range of new investments included in TAMS 3
  - Seed potato equipment, underpasses, farm roadways, health and fertility monitors
- Approximate 440 investments in TAMS 3.

# Specification development



- Virtually all investments have a specification (approx. 70 documents)
- Specifications are generic in nature – allow for any company to supply investment
- Sets out main requirements that must be achieved
- Where European or National standards have been developed, they will form basis of requirements.
- Versions of products must be available from multiple companies
- Products should be on the market – TAMS is not a support to develop products
- [www.gov.ie/en/collection/65f5b-tams-farm-building-and-structures-specifications/](http://www.gov.ie/en/collection/65f5b-tams-farm-building-and-structures-specifications/)

# Reference Costs



- All investments have individual reference cost
- Reference cost is maximum DAFM will pay for investment
- Set at mid-range in terms of quality – not basic, but not top end.
- Annual software licences not covered
- Explanatory Notes on Costings set out required measurements and units to be used

# 10 Schemes Under TAMS 3



- Awnss – Animal Welfare Scheme
- Wfcis – Women Farmers Scheme
- Yfcis – Young Farmers Scheme
- Ocis – Organics Scheme
- Tcis – Tillage Scheme
- Ppis – Pig and Poultry Scheme
- Des – Dairy Equipment Scheme
- Fss – Farm Safety Scheme
- Less – Low Emission Slurry Spreading Scheme
- Scis – Solar Scheme

# TAMS 3 Ceilings



- New Scheme ceilings all applicants
- New Investment ceiling of €90,000 for all schemes, except PPIS (€500K) and LESS (€40,000).
- Partnership ceiling remains at €160,000.
- Individual scheme ceilings for LESS and SCIS schemes.
- Grant rates are either 40% or 60%
- Awnss, TCIS, PPIS, DES all 40%
- WFCIS, YFCIS, OCIS all 60%, but eligibility conditions apply
- LESS, SCIS, FSS all 60%

# Types of Investments in Schemes



- **AWNSS**

- *Animal Housing – animal welfare, water quality*
- *Fodder Storage, farm roadways, slurry and FYM storage*
- *Grass measuring devices, slurry separators, GPS fertiliser spreaders*
- *Health and fertility monitors, drafting facilities, calf feeders*
- *Equine facilities*
- *Biomass equipment and stores*

- **OCIS**

- *Animal housing, FYM management*
- *Investments to support self-production of feed and higher standard of manure management*

# Types of Investments in Schemes



- TCIS
- Pesticide reduction equipment
  - *Mulchers; Interrow cultivators*
- GPS controls
  - *fertiliser spreaders and sprayers; steering control; combine yield monitors*
- Minimum disturbance tillage equipment
- Grain stores
- Potato Equipment
- Crop handling
  - *Weighbridges; beet cleaners; 1 tonne bag fillers*



# Types of Investments in Schemes



- WFCIS and YFCIS
  - *YFCIS – 18 to <41*
  - *WFCIS – 18 to <66*
  - *WFCIS if not established in 2022, then need educational certification*
- Enhanced support to start or expand business
- Same investments as Awnss, plus Tillage and Dairy investments and some pig and poultry investments

# Types of Investments in Schemes



- **DES**

- *Milk storage and cooling*
- *ICAR milk meters*
- *Heat recovery units*
- *Auto-washer*

- **PPIS**

- *Individual pen medication*
- *New pig housing*
- *Insulation / ventilation / lighting for energy efficiency*
- *Bio-security measures*

# Types of Investments in Schemes



- **FSS**
  - *Animal handling (cattle and sheep)*
  - *Tag readers*
  - *Slat replacement*
- **LESS**
  - *Only trailing shoe and shallow injection systems*
  - *Flow meters eligible.*
- **SCIS**
  - *Solar Panels and battery storage*

# Application Process



- Farmers apply on-line, through AgFood.ie
- Can only apply for specific listed items
- Applicants must receive approval before commencing works
- Scheme will operate in tranches
  - *Current tranche to close 6<sup>th</sup> September.*
- If tranche over-subscribed, then Ranking and Selection used to rank applicants.

# Proposed Investments



Browser tabs: AGAES005-002-2022, https://agapps.agriculture.gov.ie, Farmyard\_Layout\_Drawing.pdf

Address bar: https://agapps.agriculture.gov.ie/gcps/pages/document/documentListHolder.jsf

Navigation icons: Back, Forward, Home, Refresh, Search, Favorites, User profile, Other favourites

Bookmarks: gove.ie - Specificati..., TAMS II, gove.ie - Departmen..., SSO Login, Google, edocs, eZone, eCorrespondence C..., Peoplepoint, eSubmissions - My..., ePMDS Login

## Application Summary

Application Type	Application Date	Date Application Signed	Status Description	Status Date	Approval Date	Completion Date	Partnership
AWNSS TAMS3 Proposal	19/04/2023	19/04/2023	Online Application Submitted	19/04/2023			N

**Number of recorded investments: 3**

*This application has been submitted by: Applicant*  
*This is the Application management page. You can navigate to different sections of the Application using the tabs below.*

- Declarations
- Application Details
- Production Units
- Proposed Investments**
- Nutrient Production
- Nutrient Storage Facilities
- Alternative Contact
- Documents Upload

## Investments

Description	Identifier	Dimensions	Proposed Quantity	Unit Ref. Cost (€)	Total Ref. Cost	Proposed Cost	Island Rate	Document Attachment	Action / Status
<b>Equine Training Facilities</b>	E				23844.0	23800.00	<input type="checkbox"/>		
Outdoor Exercise area (all weather surface)		30.00 20.00	600.00 m <sup>2</sup>		23844.0				
<b>Equine Training Facilities</b>	D				31305.12	31300.00	<input type="checkbox"/>		
Horse walkers with roof		145.20	145.20 m <sup>2</sup>		31305.12				
<b>Equine Housing</b>	C				65278.42	65278.42	<input type="checkbox"/>		
American Barn for Equines		14.80 3.44	50.91 m <sup>2</sup>		14402.43				
American Barn for Equines		18.80 8.16	153.41 m <sup>2</sup>		43399.68				
Tack room		3.76 3.44	12.93 m <sup>2</sup>		3657.89				
Ancillary concrete		120.00	120.00 m <sup>2</sup>		3818.4				

Version: 14.45.00-RELEASE  
 Datetime: 05/05/23 01:46PM  
 Revision: 5573.16

Windows taskbar: Type here to search, Taskbar icons (Office, File Explorer, Edge, Chrome, Excel, Word, PowerPoint), System tray: 15:35, 17/05/2023, ENG, Notification icon

# Payment Claim



- Hire purchase or lease purchase not permitted.  
Applicant must own investment.
- Receipts must be in applicant's name
- Address, Vat charged showing, Vat Number, marked paid, company stamp, signed, dated, legible, clear descriptions including size/volume and serial numbers.
- Receipts must detail investment supplied.
- Trade-ins permitted – like for like.
- Must supply geo-tagged photograph of investment

## Service

# Targeted Agriculture Modernisation Schemes (TAMS)

From [Department of Agriculture, Food and the Marine](#)

Published on 25 May 2018

Last updated on 25 April 2023

**TAMS II is now closed for receipt of applications. Full details on TAMS 3 schemes and opening dates will be published shortly. See following link containing TAMS 3 documentation.**

- [TAMS 3](#)
- [TAMS II](#)
- [TAMS - farm building and structures specifications](#)

### Part of

Categories

[Agriculture](#)

# TAMS 3

From [Department of Agriculture, Food and the Marine](#)

Published on 20 February 2023

Last updated on 8 May 2023

Targeted Agriculture Modernisation Schemes (TAMS 3) provide grants to farmers to build and/or improve a specified range of farm buildings and equipment on their holding. The following documents list the eligible items and their associated costs.

- [TAMS 3 List of Eligible Items](#)
- [Tams 3 Support documents](#)
- [Solar Capital Investment Scheme](#)
- [Animal Welfare and Nutrient Storage Scheme](#)
- [Dairy Equipment Scheme](#)
- [Low Emission Slurry Spreading Scheme](#)
- [Organic Capital Investment Scheme](#)
- [Pig and Poultry Investment Scheme](#)





**An Roinn Talmhaíochta,  
Bia agus Mara**  
Department of Agriculture,  
Food and the Marine

**THANK YOU**



# TAMS information session in collaboration with DAFM

UCD AgTech Innovation Centre

Lyons Farm

6<sup>th</sup> June 2024



An Roinn Talmhaíochta,  
Bia agus Mara  
Department of Agriculture,  
Food and the Marine

# Horticulture Strategy & Capital Supports Overview

**Sinead Mulcahy**

AgTech Ireland Information Session  
6<sup>th</sup> June 2024



# Presentation Outline



- Horticulture in Ireland
- Horticulture Strategy 2023 – 2027
- Capital Supports for Horticulture
- Scheme of Investment Aid for the Development of the Commercial Horticulture Sector.
  - Overview
  - Eligible Investment Items
  - Scheme Process Outline
  - Application Process
  - Application Assessment
- Further Information

# Horticulture in Ireland

- The Irish horticulture industry is diverse and covers plant and food horticulture.
- Horticulture food sectors active in Ireland include the mushroom, potato, field vegetables, soft fruit, edible protected crops and top fruit sectors.
- The amenity horticulture sector includes nursery stock, protected crops, cut foliage and outdoor flowers and bulbs.
- Fourth largest sector in agriculture.
- In 2022 the total estimated value of the industry was €529 million with €429 million for food horticulture and €100 million for amenity and other non-edible products.
- While covering less than 2% of agricultural land, the Irish horticulture industry accounts for approximately 11% of total agri-food jobs (direct and downstream).



# Horticulture Strategy 2023 - 2027



- Food Vision 2030 called for a new National Strategy for Horticulture to leverage its potential for growth and contribution to climate change mitigation.
- The National Strategy for Horticulture 2023-2027 provides a road map for the horticulture industry, underpinning the Department of Agriculture, Food and the Marine's commitment to the horticulture industry and the many citizens who depend on it.
- Eight cross-cutting Key Strategic Actions (KSA) will drive change and growth across all the horticulture industry's sub sectors leading to environmental, economic and social sustainability.
  - KSA 8 - Support innovation and diversification



# Capital Support Schemes for Horticulture

- Scheme of Investment Aid for the Development of the Commercial Horticulture Sector.
- Aim: To assist in the development of the horticulture sector, including beekeeping.
- Proposed 2025 Scheme objectives:
  - Facilitate the Horticulture Sector to develop a targeted and precise approach focusing on environmental dividends, efficiency and growth.
  - improve competitiveness and contribute to the improvement of agricultural incomes and thereby the long-term viability of the enterprise.
  - facilitate the adoption of innovative technologies,
  - facilitate investment in climate change mitigation.
  - facilitate environmentally friendly practices especially technologies that promote the transition away from peat.
  - facilitate investment in improved working conditions.



# Scheme of Investment Aid for the Development of the Commercial Horticulture Sector

- Capital investment scheme for specialised plant and equipment for the horticulture sector with a maximum grant aid rate of 40% (50% for young farmers).
- The Scheme is open to micro, small and medium-sized enterprises (SMEs) active in the primary agricultural (horticulture) production sector (including beekeeping).
- The Scheme is funded by the national exchequer.
- Implemented under the European Union Guidelines for State aid in the agricultural and forestry sectors and in rural areas.
- 2024 Scheme Budget was €10 million.
- The upper cumulative limit, per applicant, for investments under the scheme over the period 2023-2027 is €5m (€2m grant aid).
- **Minimum investment amount is currently €10,000.**





# Eligible Investment Items

- The scheme is confined to new investments specifically related to horticulture.
- No specific list of eligible investment items.
- Related to primary production only (not processing).
- Examples of items grant aided:

Harvesting equipment

Irrigation equipment

Grading / packing lines

Planting Equipment

Polytunnels

Propagation Equipment

Renewable energy

Glasshouses

Specialized Tractors

Frost Protection Equipment

Mushroom Tunnels

Automation upgrades

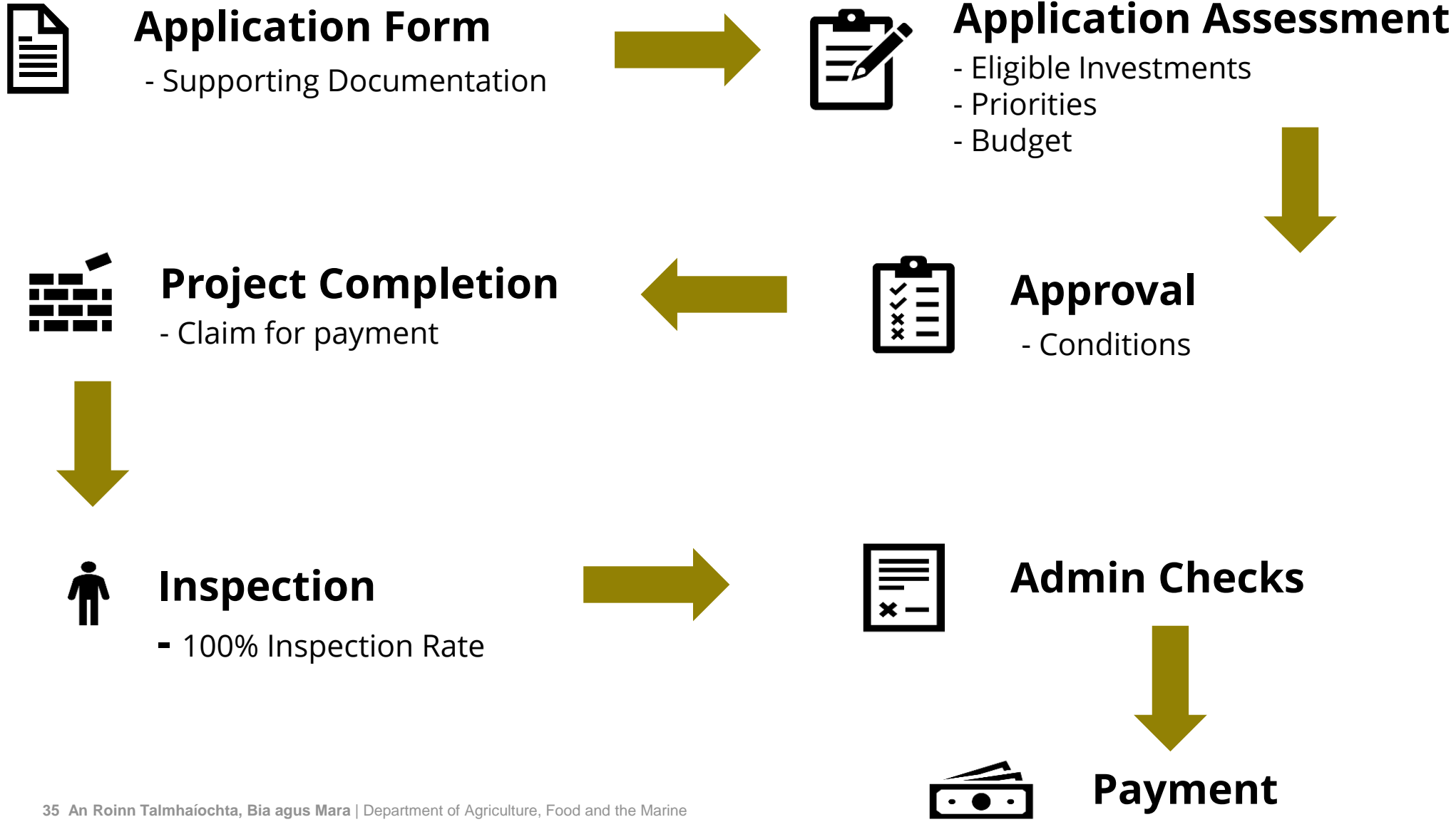


# Eligible Investment Items

- Investments which the Department considers eligible for aid under the Scheme of Aid for Producer Organisations in the Fruit and Vegetables Sector will not be grant aided under this scheme if the applicant is a member of a Producer Organisation.
- Investments which are eligible for consideration for aid under TAMS (Organic Capital Investment Scheme & Tillage Capital Investment Scheme) will not be grant aided under this scheme.
- However, investments in horticulture specific equipment with specifications exceeding those set for the TAMS Organic Capital Investment Scheme & Tillage Capital Investment Scheme will be considered by the Department.



# Scheme Process



# Application Process

- The Scheme usually opens for applications in October each year with a closing date in mid-December (6 – 8 weeks).
- Applicants must:
  - Complete the Application Form.
  - Application Form must be signed off by an Approved Adviser.
  - Complete a two-year Business Plan.
  - Include their most recent set of accounts.
  - Include quotations for all investment items they are applying on.
  - Include any supporting documentation e.g planning permission, maps etc.
- Submit all the above in hardcopy either by post or in person to DAFM Backweston before the Scheme closing date.



# Application Assessment

- Each application is assessed on a case-by-case basis, taking into account the business plan, the latest set of accounts and the project profile submitted with the application.
- The horticultural enterprise must be shown to be viable on a commercial scale.
- Applications must contain a comprehensive profile of the current and proposed enterprises, outlets, employment etc.
- Aid for investment will, always, be subject to the condition that, in the opinion of the Department, the investment is justified.
- Aid for each investment will be decided based on the availability of funds and the ongoing priorities and objectives for each sector within the industry as well as the quality, scale and value for money of the proposals.
- In some cases, only part of an investment may be approved for aid.



# Further Information

- **DAFM Website:**

Scheme of Investment Aid for the Development of the Commercial Horticulture Sector & other Horticulture Schemes (Application Forms and Scheme Terms & Conditions)

[gov - Schemes and Payments \(www.gov.ie\)](http://www.gov.ie) (Horticulture)

- **Email:**

[Horticulturegrants@agriculture.gov.ie](mailto:Horticulturegrants@agriculture.gov.ie)

[Sinead.Mulcahy@agriculture.gov.ie](mailto:Sinead.Mulcahy@agriculture.gov.ie)



# Thank You





**Panel discussion:  
Optimising farm adoption  
Trends in agtech**

**UCD AgTech Innovation Centre**

**Lyons Farm**

**6<sup>th</sup> June 2024**





# Dingle Hub: gateway to independent agtech validation trials

Deirdre de Bhailis, Manager, Dingle Hub

UCD AgTech Innovation Centre

Lyons Farm

6<sup>th</sup> June 2024



# We are an exemplar hub in Rural Community Innovation and Transition



**Our mission**

“ **to build a creative, livable, sustainable and inclusive community,**  
fostering a vibrant and diverse ecosystem of stakeholders to facilitate the creation and maintenance of well-paid, year-round incomes on the Dingle Peninsula ”



# Living Lab in action – Agriculture and Biodiversity Initiatives

## Projects that are completed and/or underway

- IoT Farm Ambassador Pilot Project
- GNI / EU LECo Anaerobic Digester Feasibility Study
- EU SKIN Project on short supply chains
- EU Ploutos Project on digital technologies and short supply chains
- Creative Climate Action Project on agricultural diversification including short supply chains
- West Kerry Dairy Farmer’s Sustainable Energy Community

## New and pipeline projects

- **SEAI: CABBIE** Partnering with MaREI to develop a comprehensive pathway to identify economically, environmentally and socially sustainable pathways for biomethane production with biofertilisers and other high value/ bulk biochemicals in a circular bioeconomy system.
- Creative Ireland Creative Coastal Resilience – embedding creativity to help rethink behaviours and take action to ensure that the Maharees is well-adapted in the face of climate change.
- EIP-Agri locally led scheme
- Farm-2-Fork proof-of-concept in a local context
- Anaerobic Digestion and Biorefinery Development

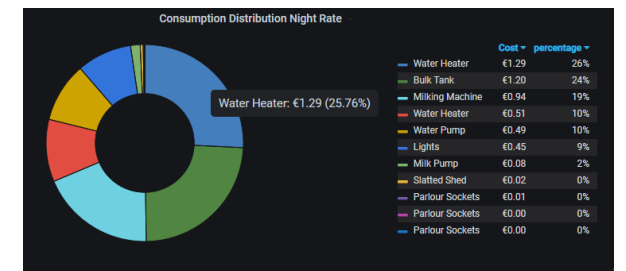
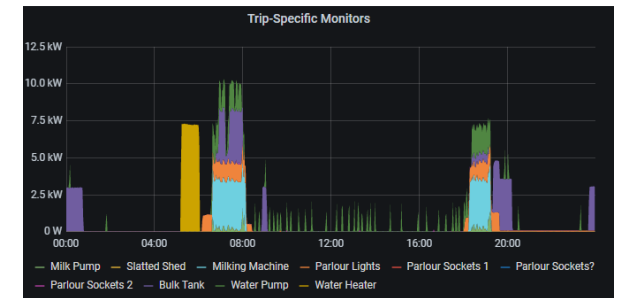
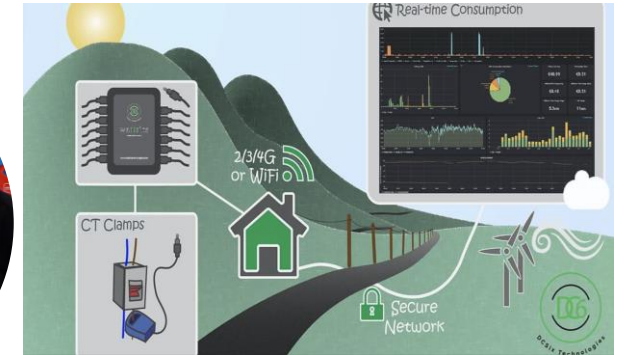


# Technology empowering farmers for Energy Efficiency



## West Kerry Dairy Farmers Sustainable Energy Community

- 130 Members
- [Wattrics](#) energy monitoring system installed on 9 farms
- 0.5MW Solar PV installation underway across 40+ farms



## Energy Master Plan: Key findings

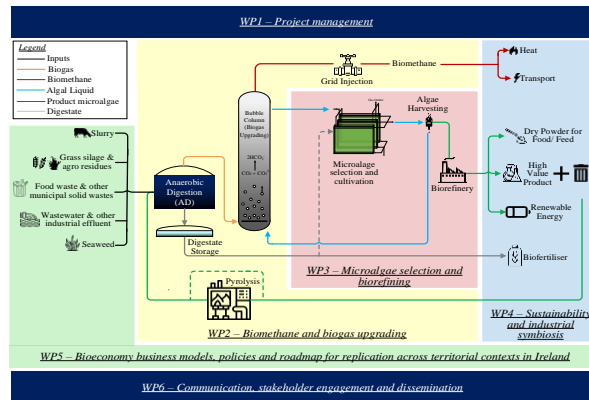
- In 2019, this farming community used energy of over 10,000 MWh (generating 2,900 tonnes of CO<sub>2</sub>) and costing circa €1 million
- Agricultural diesel is the single biggest energy consumer (52%) and costing circa €750,000.
- Heat exchange technology recommended



# CABBBIE - Developing Cascading Biomethane Biochemicals and Biofertiliser Systems for a Circular Bioeconomy in Ireland

## Opportunities for micro-algae upgrading of biogas to biomethane

- Partnering with MaREI to develop a comprehensive pathway to identify economically, environmentally and socially sustainable pathways for biomethane production with biofertilisers and other high value/ bulk biochemicals in a circular bioeconomy system.
- Multi-actor collaboration between researchers, farmers and wool co-op managers unlocking pathways for innovation.
- Eg Scouring of wool and potential opportunities around valorising scouring wastewater to enable regeneration of Irish wool industry. Introducing a process to extract high value lanolin from wool is readily implementable.



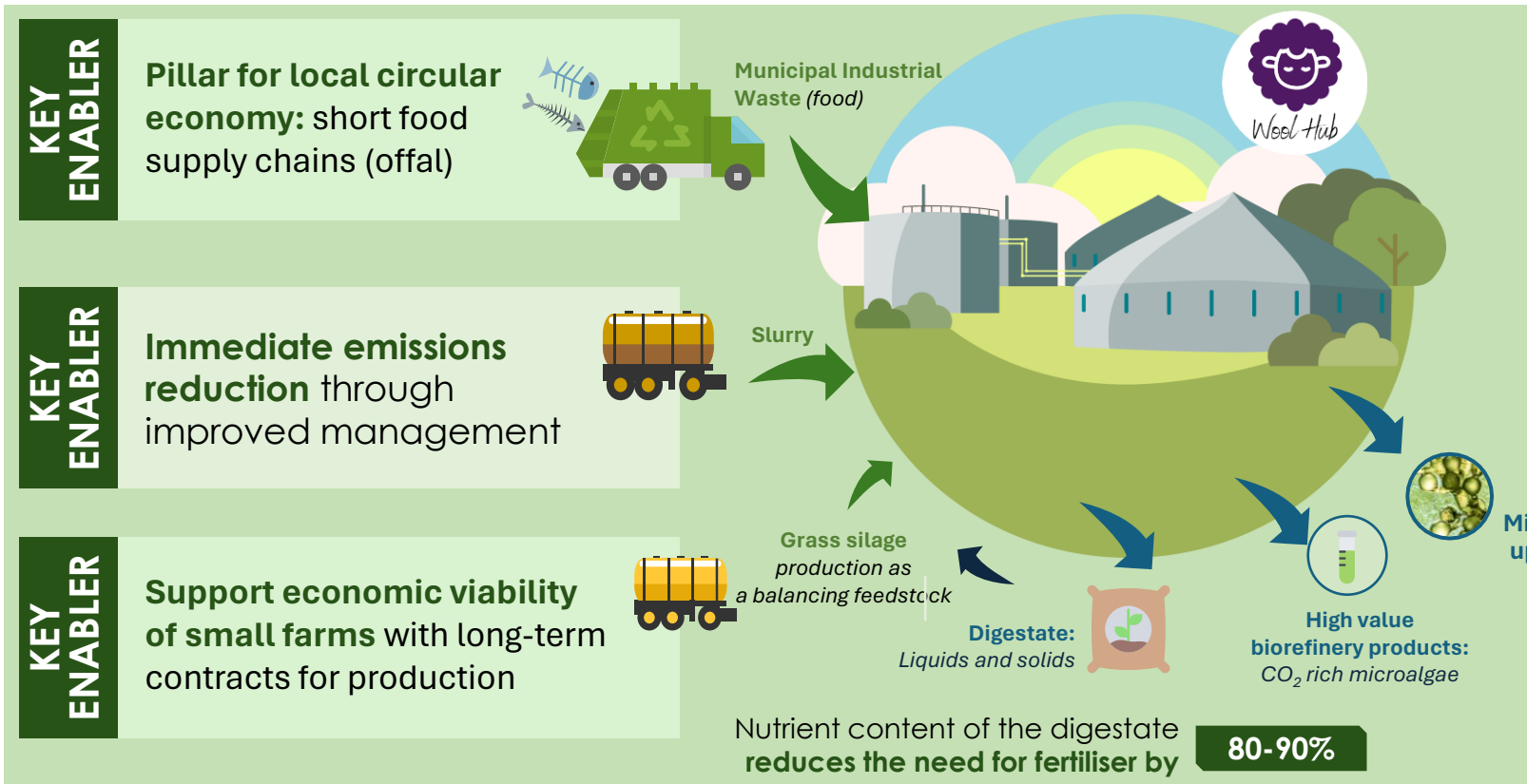
### 4 Key Questions

- How to optimise and scale-up the Bubble Column Reactor
- Which local microalgae species is ideal in Ireland
- What product/ process configuration is optimal?
- How to develop business models around this cascading process

Developing Cascading Biomethane Biochemicals and Biofertiliser Systems for a Circular Bioeconomy in Ireland (CABBBIE)

The CABBBIE logo features a circular arrow with a plant growing from it, symbolizing a circular bioeconomy. Below it is the Sustainable Energy Authority of Ireland logo, which includes the text 'SUSTAINABLE ENERGY AUTHORITY OF IRELAND' and 'An Roinn Talmhaíochta, Bia agus Mara Department of Agriculture, Food and the Marine'.

# Anaerobic Digestion Pathway for cooperative community investment in secure, local, affordable and sustainable energy



**Biomethane use in transport vehicles provides HIGHEST CARBON REDUCTION of all renewable fuels**

## CHALLENGES

- Need to develop sustainable transport using **locally produced fuel**
  - Forecourt refuelling
  - Dual fuel vehicle conversion
- Need **Renewable Transport Fuel Obligation scheme involvement** to support financial viability
- Enabling** community investment

## DINGLE PENINSULA ENERGY MASTERPLAN



**POTENTIAL MARKET: Transport fuel**

Microalgae upgrading

- Public transport:** buses
- Agri:** tractors / contract machinery
- Marine:** tour & fishing boats
- Commercial:** van and truck fleets

**KEY ENABLER**

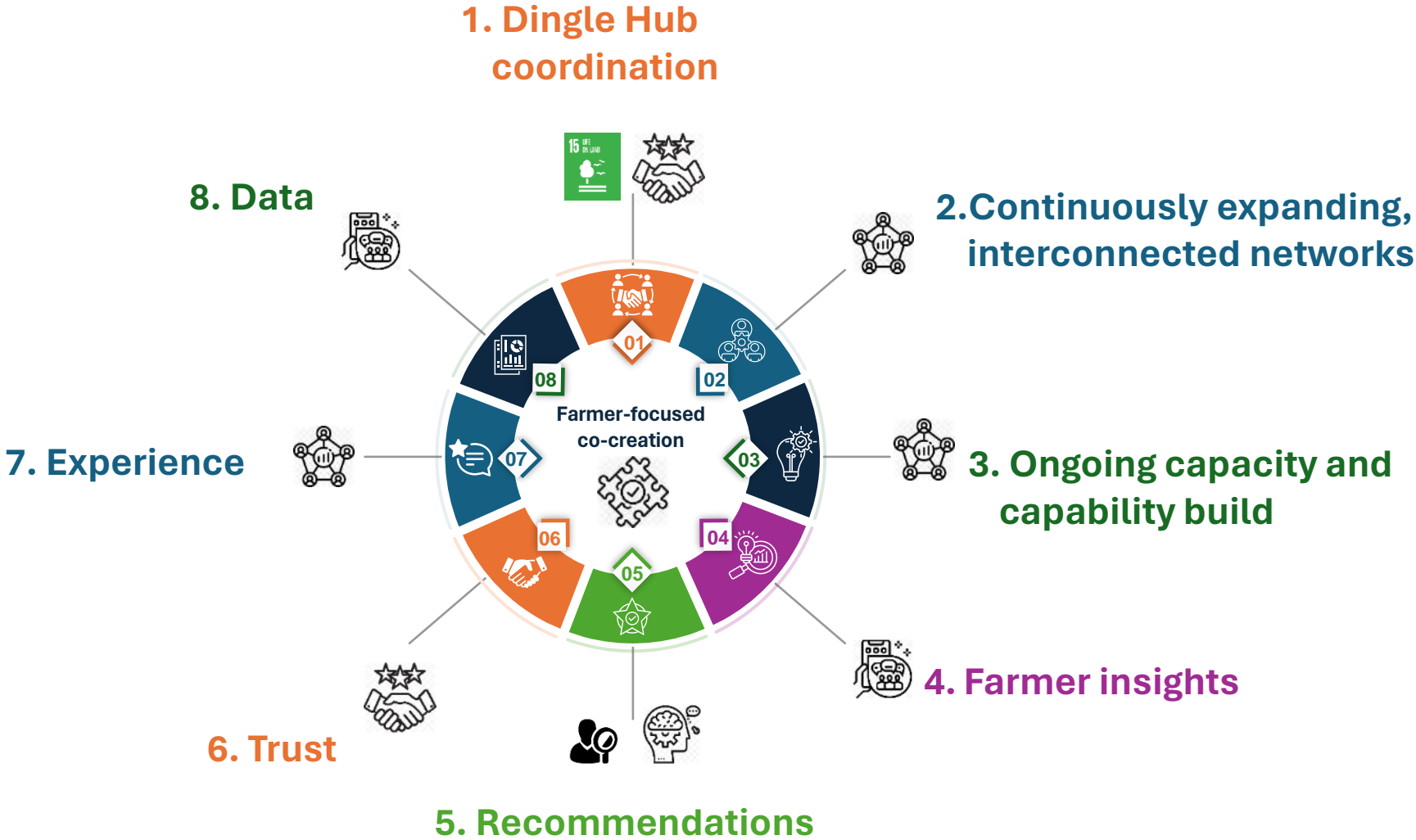
**Replaces fossil fuels with green energy**

# Multi-layered, collaborative initiatives contributing to the development of Precision Farming Solutions in Ireland





We have developed the networks, infrastructure and expertise to successfully host independent **t**echnology validation trials and contribute to the development of solutions



# Dingle Hub: Gateway to independent agricultural technology validation trials

## Direct Access to a Skilled Farming Community

We provide a direct link to a representative sample of the national farming population, all actively engaged, experienced in trial participation and focused on solutions that will drive on-farm emissions reductions.

Their hands-on use and evaluation of your technology can drive its success and acceptance in the market.

## Streamlined Process, Reliable Results

We understand the value of your time.

That's why we offer a single point of contact for all your trial needs, ensuring you get the results you need, when you need them.

Our commitment to simplicity means you can focus on innovation, not administration.

## Expertly-Crafted Workshops for Valuable Insights

Our tailored workshop facilitation goes beyond mere data collection.

We dive deep to extract crucial farmer feedback and insights, creating a collaborative space where farmers contribute constructively to the refinement of your technology.

“



In 2023, Origin Enterprises engaged in a project with Dingle Hub to evaluate our smartphone application, GrassMax, on a number of commercial farms in the region. Dingle Hub managed the project for us from start to finish, liaising with a significant number of farmers to capture and provide valuable data and feedback at prescribed periodic intervals. The service provided by Dingle Hub enabled our team to focus on existing workstreams safe in the knowledge that our product trial was being managed appropriately. Results were compiled and provided on time and in a format that we prescribed which really facilitated our results evaluation process. Through a number of workshops, we also gathered first hand independent feedback from the farmer users which proved very valuable. Dingle Hub provides a fantastic service for product evaluation on working commercial environments.

”

*Kieran, Origin Enterprises*

# Thank you!

Go raibh maith agat

To find out more about Dingle Hub: <https://dinglehub.com/>  
Contact Deirdre de Bhailis, Manager: [deirdre@dinglehub.com](mailto:deirdre@dinglehub.com)



**TAMS information session  
in collaboration with DAFM**

**UCD AgTech Innovation Centre**

**Lyons Farm**

**6<sup>th</sup> June 2024**